



Setting Environment Variables For Yadle Desktop App and Integrations

Installation Guide

Version 1.1

Setting Environment Variables

For Yadle Desktop App and Integrations

Setting environment variables on your workstation will pass your Yadle credentials to the corresponding App preventing subsequent logins. It is an optional step to help further improve user workflow experience.

Table of Contents

Linux



- Ubuntu



PAGE 2

- CentOS



PAGE 2



Windows

PAGE 3



MacOS

PAGE 6

Linux

Ubuntu:

Step 1:

Open Terminal.

Step 2:

Using an editor such as vi, add the following lines to ~/.profile. Replacing <user> with your Yadle username, and <password> with your Yadle password.

```
export YADLEUSER=<user>
export YADLEPASSWORD=<password>
```

Step 3:

Log Out and Sign back in to initialize new environment variables.

CentOS

Step 1:

Open Terminal.

Step 2:

Using an editor such as vi, add the following lines to ~/.bash_profile. Replacing <user> with your Yadle username, and <password> with your Yadle password.

```
export YADLEUSER=<user>
export YADLEPASSWORD=<password>
```

Step 3:

Log Out and Sign back in to initialize new environment variables.

Windows

PowerShell Method

Step 1:

Open Windows PowerShell.

Step 2:

Set YADLEUSER environment variable. Replace **<user>** with your Yadle username.

```
PS > [Environment]::SetEnvironmentVariable("YADLEUSER", "<user>", "User")
```

Step 3:

Set YADLEPASSWORD environment variable. Replace **<password>** with your Yadle user password.

```
PS > [Environment]::SetEnvironmentVariable("YADLEPASSWORD", "<password>", "User")
```

Step 4:

Sign out of the current user account and Sign back in for environment variables to become active.

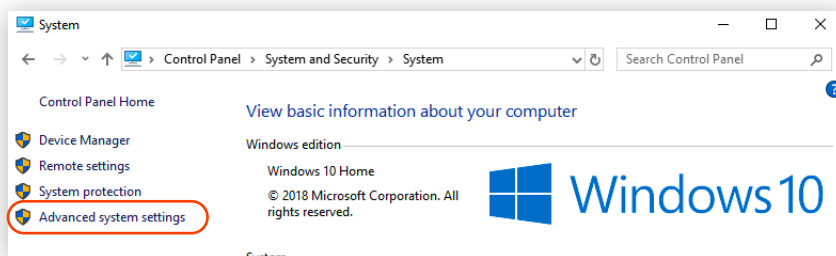
GUI Method: Windows 10

Step 1:

Open *Control Panel > System and Security > System*.

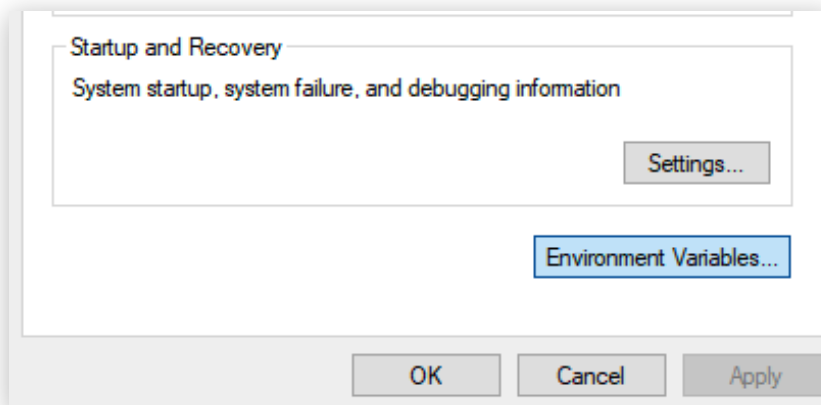
Step 2:

Click on Advanced system settings.



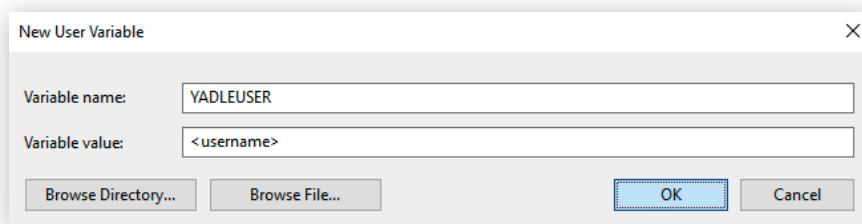
Step 3:

Click Environment Variables...



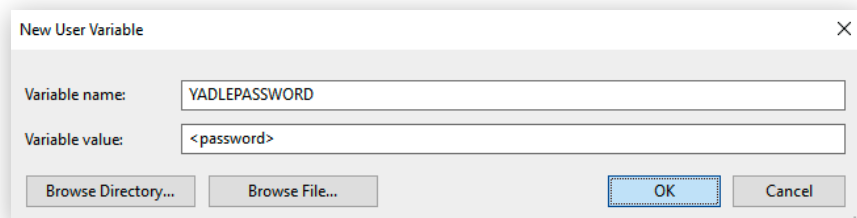
Step 4:

Under user variables, Click **New...** Enter YADLEUSER for variable name and **<username>** for variable value. Replace **<username>** with your Yadle username. Once Entered Click **OK**.



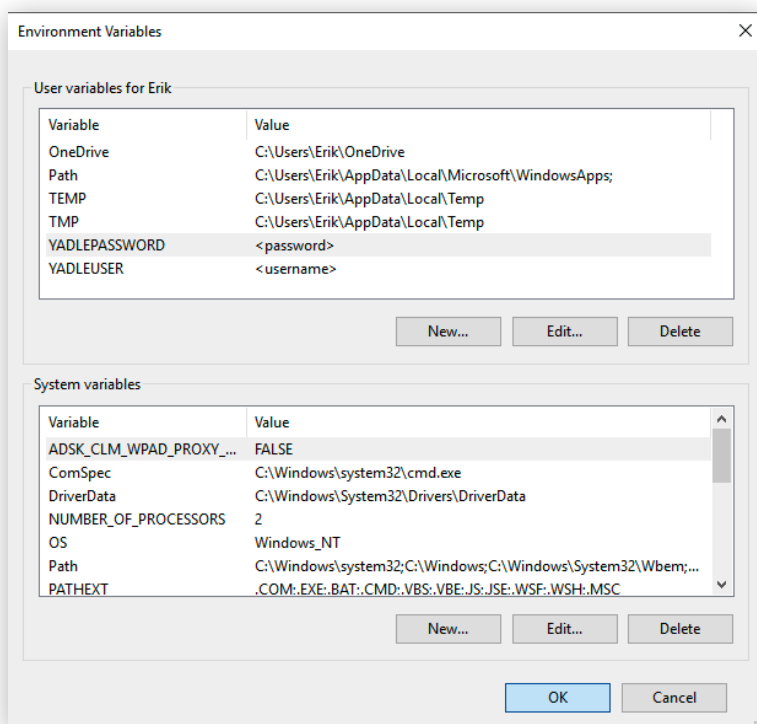
Step 5:

Under user variables, Click **New...** Enter YADLEPASSWORD for variable name and **<password>** for variable value. Replace **<password>** with your Yadle password. Once Entered, Click **OK**.



Step 6:

To save changes, Click **OK**. There is no need to Sign Out and Sign back in to initialize environment variables when set using GUI Method.



MacOS

Step 1:

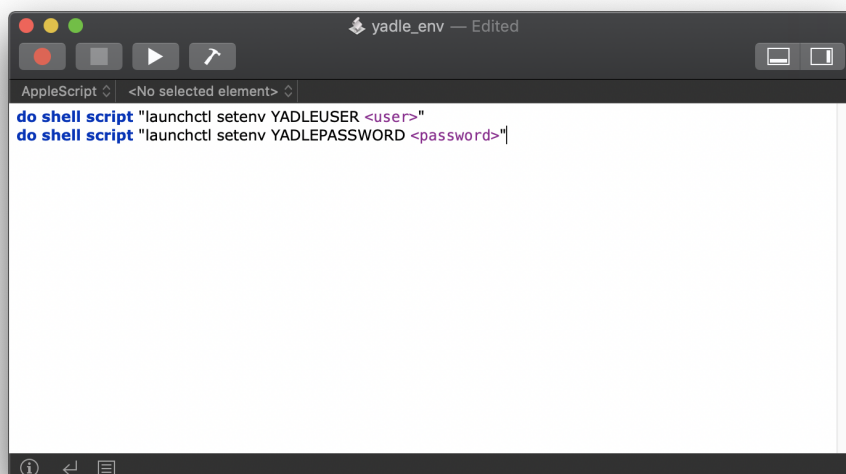
Open Script Editor. **Applications > Utilities > Script Editor.**



Step 2:

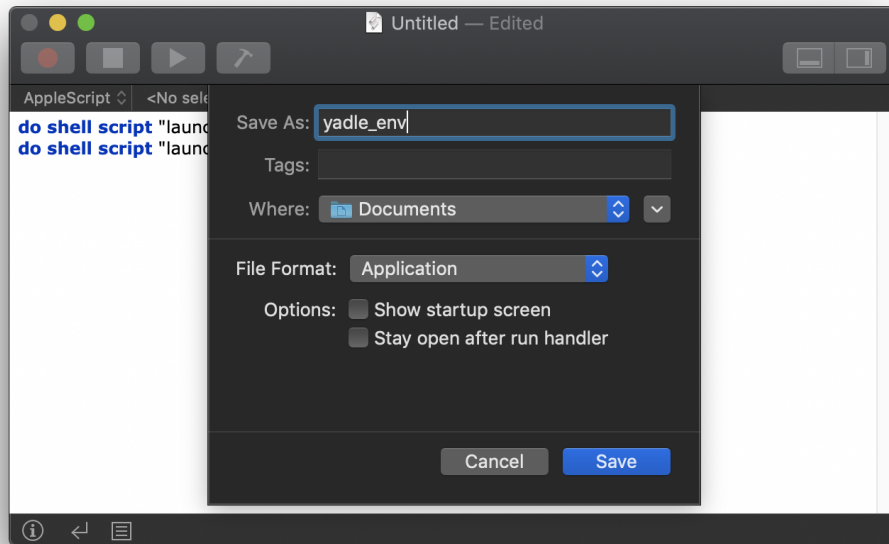
Create a **New Document**. Add the following lines, replacing **<user>** with your Yadle username and **<password>** with your Yadle user password.

```
do shell script "launchctl setenv YADLEUSER <user>"
do shell script "launchctl setenv YADLEPASSWORD <password>"
```



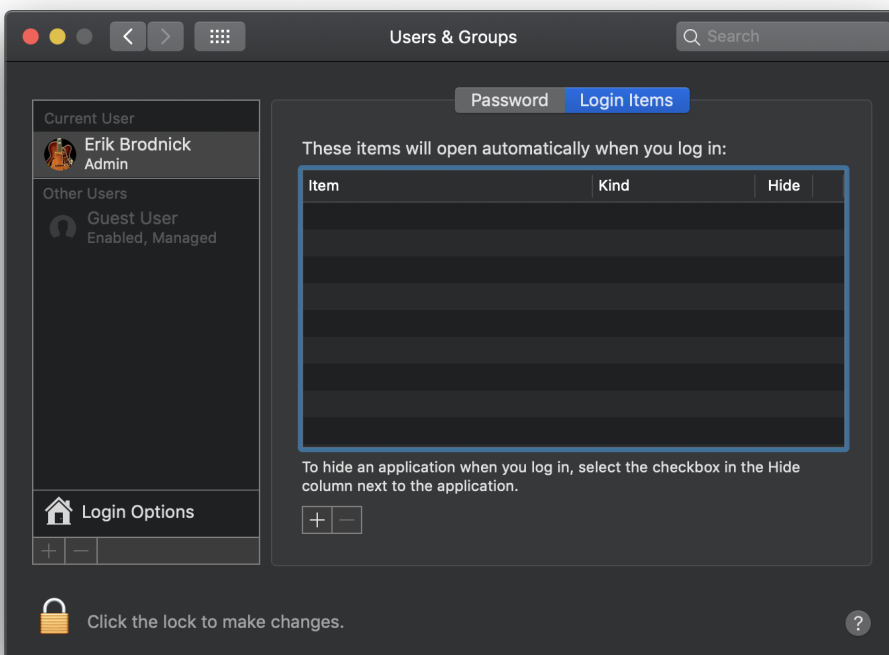
Step 3:

Go to **File > Save**. Give this script a name (ex. `yadle_env`), choose a location where to save, and for File Format: Select **Application** from the dropdown menu. Click **Save**.



Step 4:

Go to **Applications > System Preferences > Users & Groups**. Under Login Items, click on the “+” symbol.



Step 5:

Navigate to file you created with Script Editor. Click **Add**.

Step 6:

Log Out of current user and Sign back in to initialize environment variables.
