



# Yadle Desktop App

Installation Guide

Version 1.1

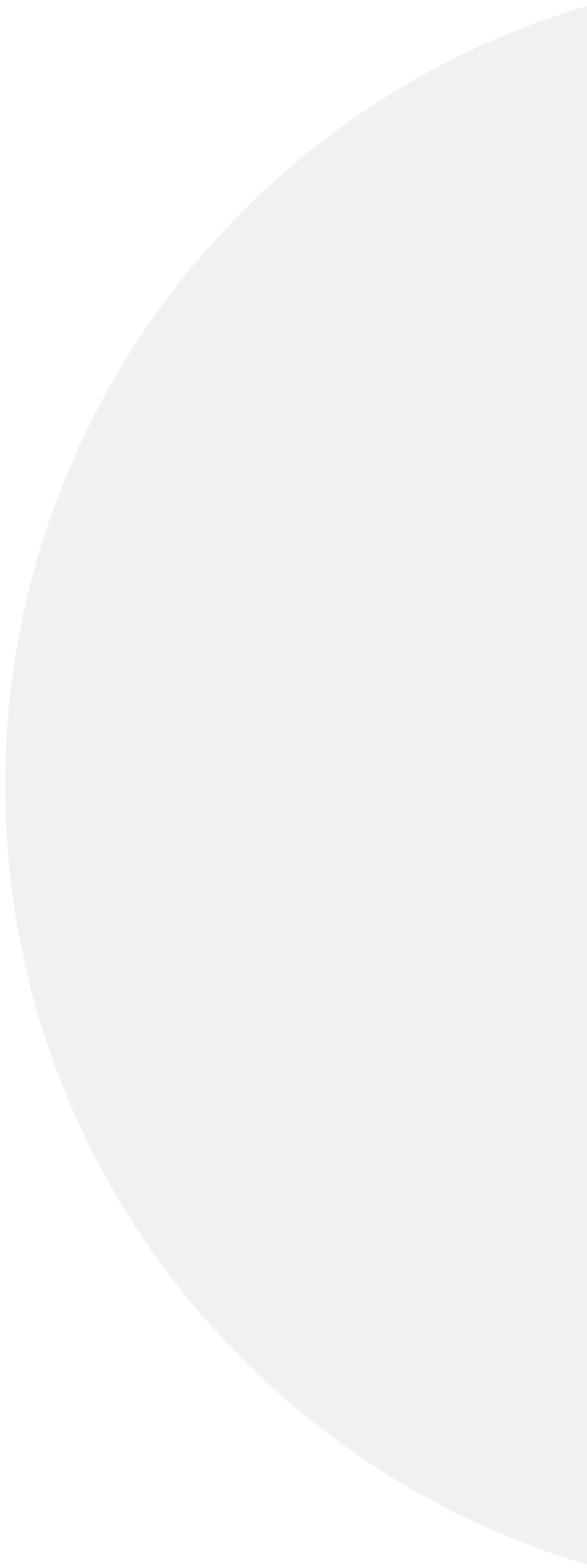


Table of Contents

Linux



- RPM-Based Distribution
- DEB-Based Distribution
- AppImage Method



PAGE 2

PAGE 3

PAGE 4



Windows

PAGE 5



MacOS

PAGE 7

Support Matrix:

Linux	Windows	MacOS
Ubuntu 18.04	Windows 10	MacOS Mojave (10.14)
RHEL/CentOS 7		

# Linux

## RPM-based Distribution (Red Hat, CentOS):



### Step 1:

Open Terminal.

### Step 2:

The Yadle Desktop App requires `libappindicator` prior to installing. Verify if `libappindicator` package is installed

```
$ rpm -q libappindicator
```

### Step 3:

If `libappindicator` is not installed, you must install it before proceeding.

```
$ sudo yum install libappindicator
```

### Step 4:

Download rpm package using link provided in Customer Links pdf. Be sure to `<OrgID>` replace with the actual OrgID given to you by Yadle.

```
$ curl -O https://download.yadle.com/desktop/<OrgID>/yadle_desktop.rpm
```

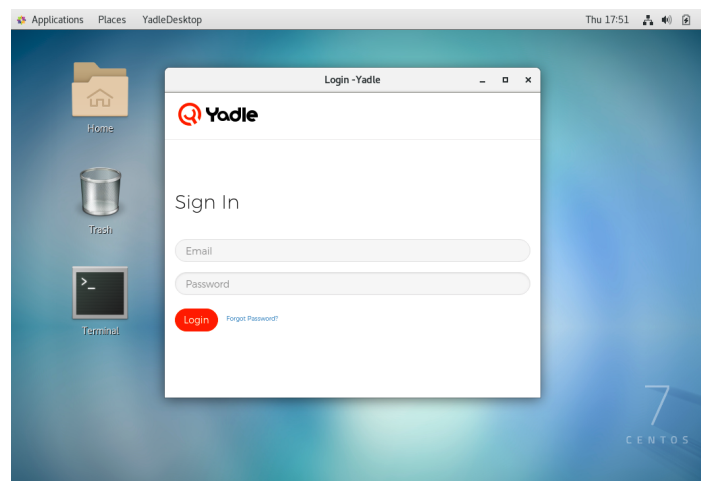
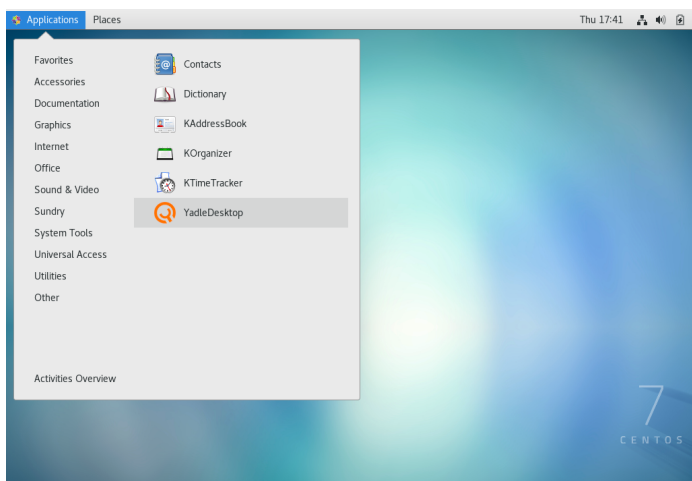
### Step 5:

Install `yadle_desktop.rpm` to default directory `/opt/YadleDesktop`.

```
$ sudo rpm -ivh yadle_desktop.rpm
```

### Step 6:

Launch Yadle Desktop App from GUI **Applications > Office > YadleDesktop**. Click and drag to anywhere on desktop to create shortcut. Sign in with Yadle username and password.



# Linux

## DEB-based Distribution (Debian, Ubuntu):



### Step 1:

Open Terminal.

### Step 2:

The Yadle Desktop App requires `gconf2` and `libappindicator1` prior to installing. Verify if `gconf2` and `libappindicator1` packages are installed.

```
$ dpkg -s gconf2 libappindicator1 | grep Status
```

### Step 3:

If `gconf2` and `libappindicator1` are not installed, you must install them before proceeding.

```
$ sudo apt-get install gconf2 libappindicator1
```

### Step 4:

Download deb package using link provided in Customer Links pdf. Be sure to `<OrgID>` replace with the actual OrgID given to you by Yadle.

```
$ curl -O https://download.yadle.com/desktop/<OrgID>/yadle_desktop.deb
```

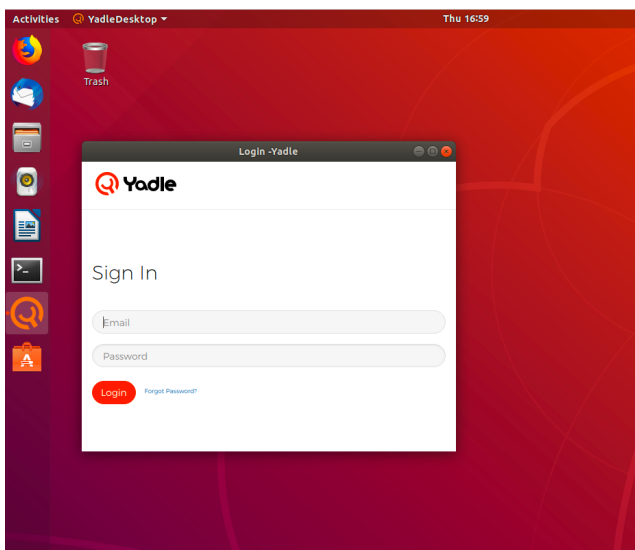
### Step 5:

Install `yadle_desktop.deb` to default directory `/opt/YadleDesktop`.

```
$ sudo dpkg -i yadle_desktop.deb
```

### Step 6:

Launch Yadle Desktop App with Yadle icon on sidebar. Sign in with your Yadle username and password. Click Login.



# Linux

## AppImage Method: All Distributions



### Step 1:

Open Terminal.

### Step 2:

Download `yadle_desktop.AppImage` using link provided in Customer Links pdf. Be sure to `<OrgID>` replace with the actual OrgID given to you by Yadle.

```
$ curl -O https://download.yadle.com/desktop/<OrgID>/yadle_desktop.AppImage
```

### Step 3:

Change permissions on `yadle_desktop.AppImage` so file is executable.

```
$ chmod +x yadle_desktop.AppImage
```

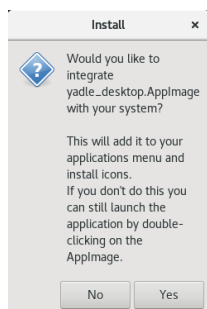
### Step 4:

Launch `yadle_desktop.AppImage` from Terminal

```
$ ./yadle_desktop.AppImage
```

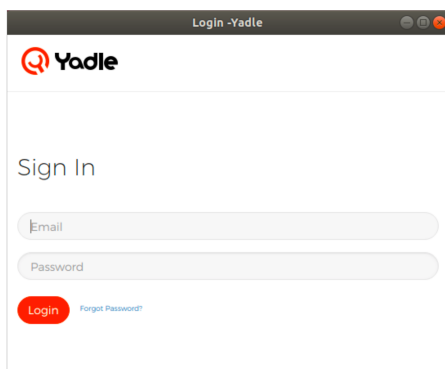
### Step 5:

Click Yes to create Yadle Desktop shortcut on your applications menu. Otherwise click No and you can launch the Yadle Desktop App using `.AppImage`.



### Step 6:

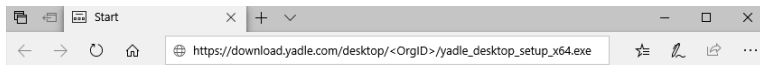
Sign in with your Yadle username and password. Click Login.



# Windows

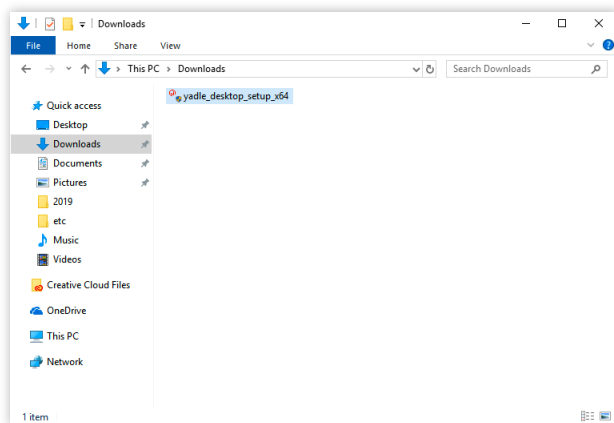
## Step 1:

Open a web browser. Paste link provided in “Yadle Customer Links” pdf. Download and Save yadle\_desktop\_setup\_x86.exe.



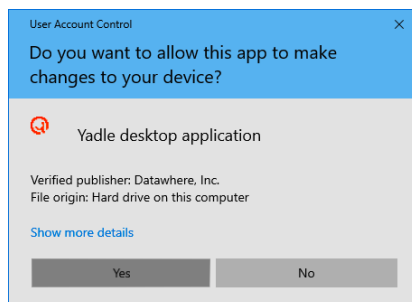
## Step 2:

Double click on yadle\_desktop\_setup\_x64.exe.



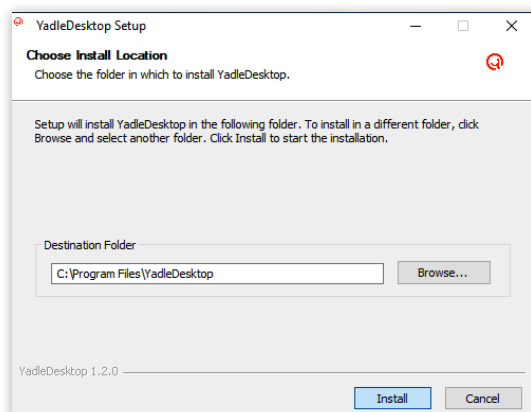
## Step 3:

Click Yes to allow this app to make changes to your device.



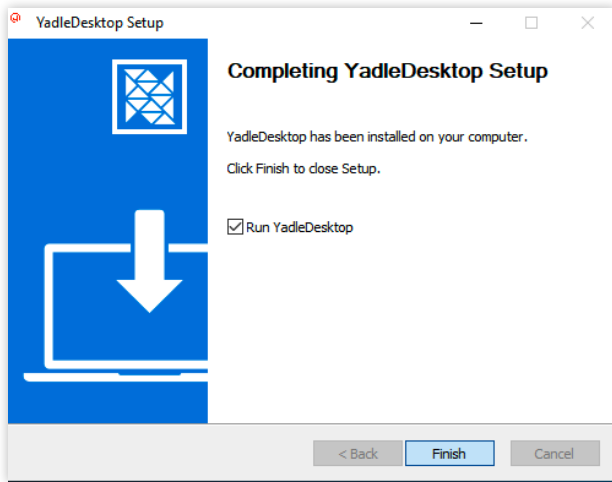
## Step 4:

The Yadle Desktop Installer will launch. Install to default location **C:\Program Files\Yadle Desktop**. Click Install.



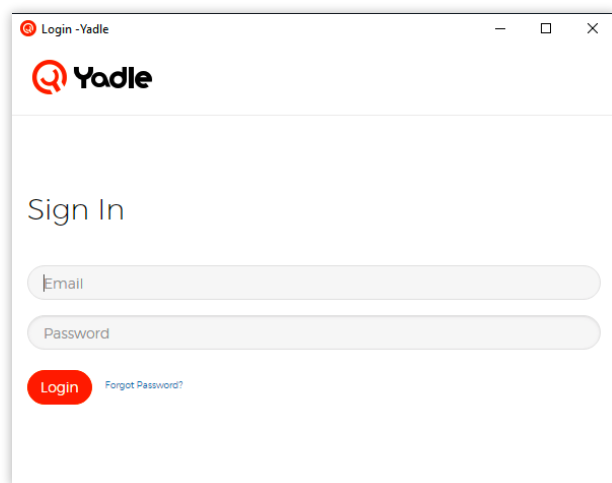
### Step 5:

After installation has completed successfully, click Finish.



### Step 6:

Launch The Yadle Desktop will Launch and a desktop shortcut will be created. Sign in with your Yadle username and password.



# MacOS

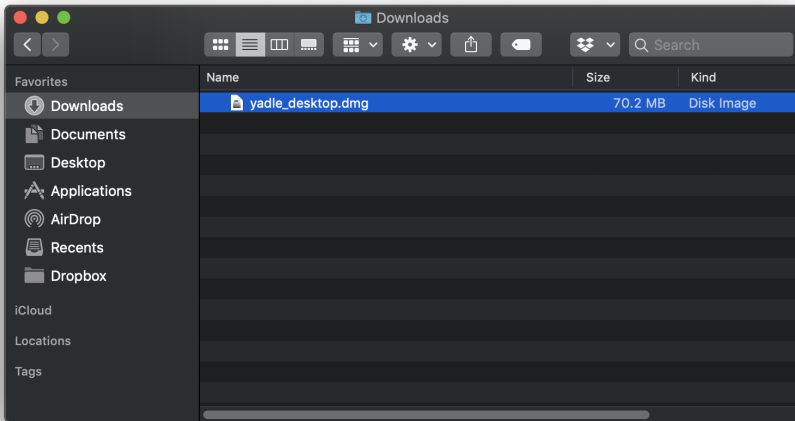
## Step 1:

Open a web browser. Paste link provided in “Yadle Customer Links” pdf. Download and Save yadle\_desktop.dmg.



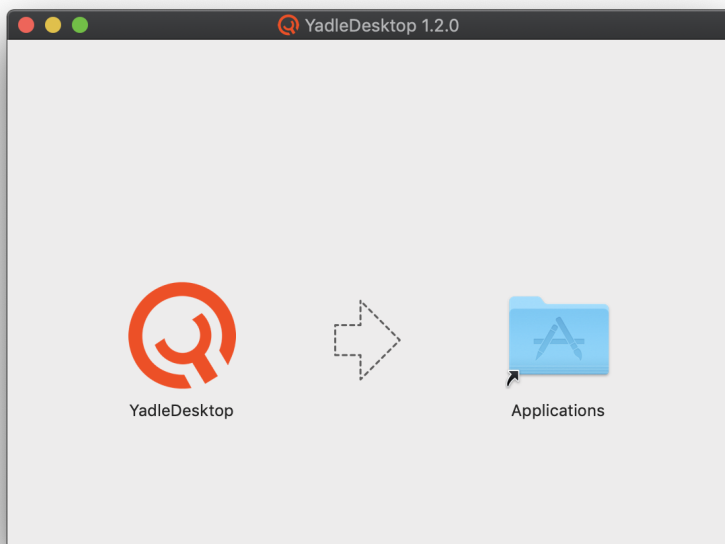
## Step 2:

Double-click on the yadle\_desktop.dmg file. A Finder window will open.



## Step 3:

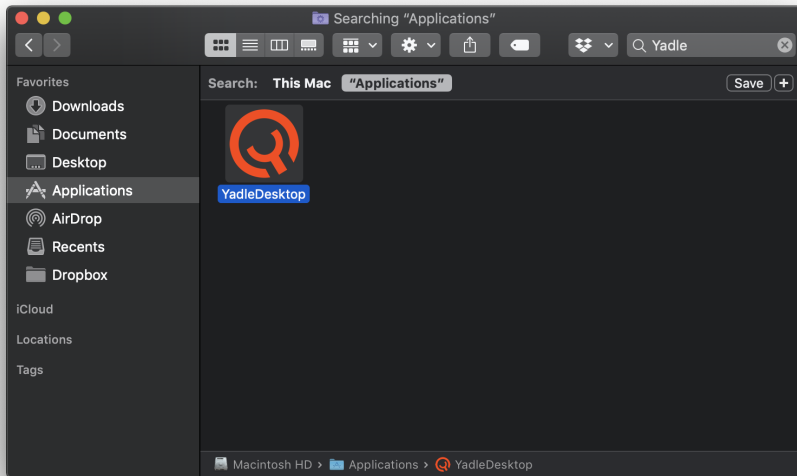
Click and drag Yadle Desktop icon to Applications folder.





#### Step 4:

Launch Yadle Desktop from Applications directory.



#### Step 5:

Sign in using your Yadle username and password. Click Login.

